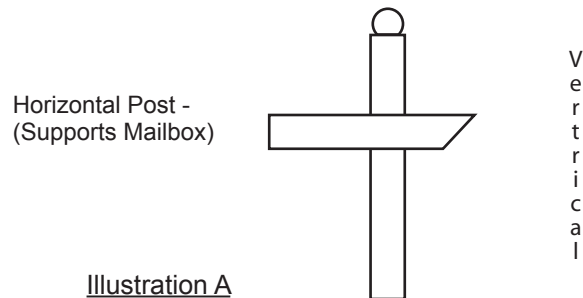
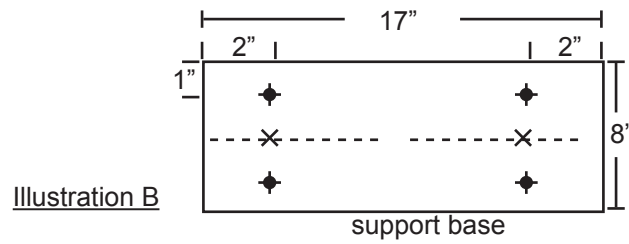


Daves Country Built Mailboxes: Assembly Instruction Using KIT K195

Assembly Kit K195 was designed to secure your custom country mailbox to any 4"x4" wood type mailbox post setup. - See Illustration (A)



Kit K195 contains a 8" x 17" - 1/2" pressure treated plywood support base. See (Illustration B) and all necessary screws (2- 1 1/2" Galvanized & 4 - 1" Black)



Instructions:

The support base is labeled top on one side and bottom on the other.

Keeping the top of the support base facing you, place the bottom on the 4" x 4" horizontal post.

Make sure the two pre-drilled center holes in the support base are aligned directly on the center of the 4" x 4" horizontal post while hitting against the 4" x 4" vertical post.

Now screw in the two 1 1/2" Galvanized screws into the 4" x 4" horizontal post.

Once the support base is secured to the 4" x 4" horizontal post, place the mailbox onto the support base making sure it is centered and pushed as far back as it can go.

Now secure the mailbox by screwing the four 1" black screws from underneath into the support base and right through to the bottom of the mailbox itself. This should firmly assemble the mailbox to the post.

